



Ronald McDonald
House Charities®
Singapore

Keeping families close

ANNUAL REPORT 2025



Contents

OUR VISION, MISSION AND OVERVIEW	02
PRESIDENT'S MESSAGE	03
EXECUTIVE DIRECTOR'S REPORT	04
OUR GOVERNANCE & OUR BOARD	05
OUR FAMILIES SHAPE US	
Baby Mira's Story	08
Ilhan's Story	09
OUR CORE PROGRAMMES DEFINE US	
RMHC House @ NUH	10
• RMHC Family Room @ NUH (PICU)	11
• RMHC Family Room @ NUH (NICU)	11
• RMHC Family Room @ IMH	12
EXTENDING OUR MISSION OF KEEPING FAMILIES CLOSE WITH OTHER PROGRAMMES BEYOND THE HOSPITAL	13
HIGHLIGHTS OF 2025	15
CHAMPIONS AND VOICES OF OUR CAUSE	17
OUR FUNDRAISING EFFORTS	19
OUR INVALUABLE PARTNERSHIP WITH McDONALD'S	20
CORPORATE SPONSORS AND SUPPORTERS FOR 2025	21
INDIVIDUAL SPONSORS AND SUPPORTERS FOR 2025	22

Our Vision

Championing family-centred care for seriously ill children and their families

At Ronald McDonald House Charities (RMHC) Singapore, we believe a family's love and support is as vital as any medicine when a child is hospitalized. That belief guides everything we do.

Part of a network of over 260 RMHC chapters worldwide, we identify needs on the ground and deliver meaningful, practical support. We build on years of experience and deep community relationships to strengthen and expand our core programmes, always putting families at the centre.

We partner closely with the medical community to improve access to care, and form strategic alliances with organisations that extend our reach and capacity. And most importantly, our work is sustained by you—our donors, volunteers, staff and friends—whose support makes this care possible.

Our Mission

The mission of Ronald McDonald House Charities (RMHC) is to create, find and support programmes that directly improve the health and well-being of children.

Guiding us in our mission are our core values:

- Leading with compassion, and staying firmly committed.
- Celebrating the diversity of the programme we offer – through the support of our staff, volunteers and donors who make them possible.
- Staying true to our heritage of responsible stewardship.
- Operating with accountability and transparency.



Overview of Ronald McDonald House Charities Singapore

Since 1 November 2013, RMHC Singapore has been a full member of the National Council of Social Services (NCSS). NCSS enables us to establish new collaborations with agencies in Singapore's social service sector, allowing us to advocate for and support the emerging and unmet social needs of families and children.

Ronald McDonald House Charities ("RMHC") was registered as a society or set up as a trust/set up by way of a trust deed or incorporated as a company limited by guarantee in 03/11/1999.

RMHC was registered as a charity under the Charities Act (Chapter 37) since 03/11/1999.

RMHC has been accorded IPC (Institution of a Public Character) status from 24/07/2025 to 23/07/2026.

Unique Registration Number (UEN): Sg8SS0006C

Registered Address: 5 Lower Kent Ridge Road, #04-00, National University Hospital, 119074

Auditor: Ernst & Young LLP

Legal Counsel: Mallal & Namazie



President's Message

2025 was a year of meaningful progress and institutional strengthening for Ronald McDonald House Charities (RMHC) Singapore. Guided by our mission to support families with seriously ill children, we remained focused on delivering compassionate, family centred care while building a strong foundation for long term sustainability and trust.

At RMHC Singapore, family centred care recognises that when a child is ill, the needs of the family are inseparable from the care of the child. It is centred on keeping families close, involved, supported, and strong—because healing and wellbeing extend beyond medical treatment alone.



At the heart of our work is the direct impact we create for families in need.

In 2025, RMHC Singapore supported 1,282 families through our Ronald McDonald Family Rooms at both the National University Hospital (NUH) and the Institute of Mental Health (IMH), as well as the Ronald McDonald House at NUH. The families served at the Ronald McDonald House at NUH translated to more than 1,200 room nights provided during the year. By enabling families to remain nearby and present during critical periods of care, we help reduce emotional, physical, and financial strain at some of the most challenging moments in their lives.

A key milestone in 2025 was the attainment of Institution of a Public Character (IPC) status, granted on 24 July 2025. This achievement reflects the collective efforts of our Board, management, and partners in upholding high standards of governance, accountability, and public trust. IPC status strengthens our ability to engage donors and corporate partners, while reaffirming our commitment to transparency and responsible stewardship.

As the Charity continues to grow, we took deliberate steps to strengthen governance and oversight. Our Board committees were reinforced with six new members, bringing diverse expertise to support effective decision making. We established a Finance & Investment Committee to enhance financial stewardship and long term sustainability, and formed an IPC Task Force to guide compliance and best practice reporting.

Fundraising remained a strong pillar of support in 2025. Our annual Gala Dinner raised over S\$380,000 with the support of more than 400 attendees and generous sponsors. We were honoured by the presence of Mr Seah Kian Peng, Speaker of the Parliament of Singapore, as our Guest of Honour, together with his spouse, Jean.

Partnerships continue to be a cornerstone of our work. We strengthened our longstanding collaboration with McDonald's Singapore and remain deeply grateful to our donors, sponsors, and community partners whose support enables us to deliver our mission.

As we look ahead, RMHC Singapore remains focused on caring for families, strengthening our organisation, and stewarding the trust placed in us by the community. To those who are learning about RMHC Singapore for the first time or considering how you might contribute, we warmly invite you to journey with us—whether as a donor, partner, or volunteer—in ensuring that families are never alone when they need us most.

Regards,

Keoy Soo Earn

President
Ronald McDonald House Charities Singapore



Executive Director's Report

Dear Partners, Friends and Supporters,

Reflecting on 2025, I am immensely proud of what we have achieved together at Ronald McDonald House Charities Singapore. In July, we attained the IPC (Institution of Public Character) status, an accomplishment that underscores our organisational credibility and firm commitment to our mission. Financially, we closed the year with a surplus of \$644,135 positioning us for continued growth in the coming years, notably our new House and 3 Family Rooms at Alexandra Hospital at the end of 2029.

2025 also marked our first-ever International Family Day campaign across Southeast Asia, reinforcing our mission to keep families of critically ill children closer together, collectively celebrating the stories of their resilience and strength.

Throughout the year, we have been fortunate to have many donors who have supported our activities. These include two Family Days Out during the school holidays in June and December with Northern Trust and TEEG. We would also like to extend our heartfelt thanks to our generous sponsors, including Commonwealth Concepts and Cloversoft. In addition, we are thrilled to welcome Watson Farley & Williams as new partners. Their engagement not only included wonderful contributions for the holidays but also their efforts in decking the halls for Christmas, along with thoughtful gifts for children in the wards.

We are especially grateful for the unwavering support of our forever and founding partner, McDonald's. Their commitment has been a cornerstone of our success, from fundraising to providing volunteers to assist at our facilities as well as key events such as our Annual Gala.

Last but not least, a huge thank you to our Board of Directors for their strong support and leadership, and my steadfast team who lives and breathes our mission every single day, bringing hope to the families we serve.

Together, we look forward to building on these achievements and continuing our journey of service and engagement in the coming year. Thank you for being an integral part of our community.

Yours sincerely,

Serene Koh

Executive Director
Ronald McDonald House Charities Singapore



Our Governance & Our Board

RMHC Singapore (RMHC) is a registered charity under the Societies Act and also an Institution of Public Character (IPC). We abide strictly to the corporate governance code set by RMHC Global and the Charity Council in Singapore. Our finances are independently audited every year in accordance with local regulations.

RMHC maintains a Conflicts of Interest Policy applicable to all Board and Committee Members as well as all staff members. The purpose of the policy is to protect the interest of RMHC when it is considering entering a transaction or arrangement that might benefit the private interest of an officer or Board Member of RMHC, or any other interested persons.

In maintaining prudent oversight of our reserve funds, RMHC ensures that donated funds are used in areas that are in accordance with our mission, i.e to create, find and support programmes that directly improve the health and well-being of children whilst consistently building and maintaining adequate spendable reserves to keep the Charity's cause as a going concern.

The RMHC Board, comprising office bearers and ordinary board members, is ultimately responsible for the charity achieving its purpose as set out in

the RMHC Constitution and in accordance with the License Agreement between RMHC and McDonald's Corporation.

The Board is tasked with ensuring that the charity upholds good governance in keeping with the RMHC Constitution as a basic requirement. As good governance, the Board also collectively set the vision and mission for RMHC, and the strategic roadmap and plans to achieve these. The varied experiences, expertise, skills and knowledge of each Board Member is what makes the Board unique as a team, with each Board Member playing an active role for the charity's benefit.

Another part of good governance requires upholding, proper practices, including setting up systems, policies and procedures to ensure the strategic plan is carried out with responsibility and accountability. In undertaking this task, the Board works collectively and through Committees to identify processes and areas of risk that require governing and monitoring. In 2025, we added 6 new sub-committee members, and also formed a new Finance and Investment Committee, and an IPC Task Force.

Board Office-Bearers

PRESIDENT

Mr Keoy Soo Earn

Date appointed: 26 June 2025

SECRETARY

Mr Karam Malhotra

Partner & Global VP
Smart Media 4U Technology Pte Ltd
CEO, Xtend

Date appointed: 26 June 2025

VICE-PRESIDENT

Ms Andrea Noel Friedman

Date appointed: 6 September 2023

TREASURER

Mr Lim Tze Chern

Executive Director
Nomura Singapore Limited

Date appointed: 26 June 2024

Board Members

Ms Amita Dutt

Founder Legal Consultant
RHTLaw Asia LLP

Date appointed: 21 June 2021

Mr Brian Poh Zhi Qian

Principal Clinical Psychologist and Deputy Head of
Psychology Department
Institute of Mental Health

Date appointed: 6 September 2023

Ms Diana Ser Siew Yen

Freelance Journalist

Date appointed: 16 June 2020

Ms Linda Ming Po Lin

Head, Brand Communications and Customer Care
Hanbaobao Pte Ltd

(Licensee of McDonald's Singapore)

Date appointed: 21 June 2021

Ms Sharol Teo Hui Ling

Vice President, Human Resources
(MEIA and SEAA)

Shangri-La International Hotel Management
Pte Ltd

Date appointed: 16 June 2025

Associate Professor Stacey Tay Kiat Hong

Senior Consultant in Paediatric Neurology
National University Hospital

Date appointed: 16 June 2020

Ms Belinda Young Hsien Lin

Director

Centrecourt Group

Date appointed: 16 June 2020

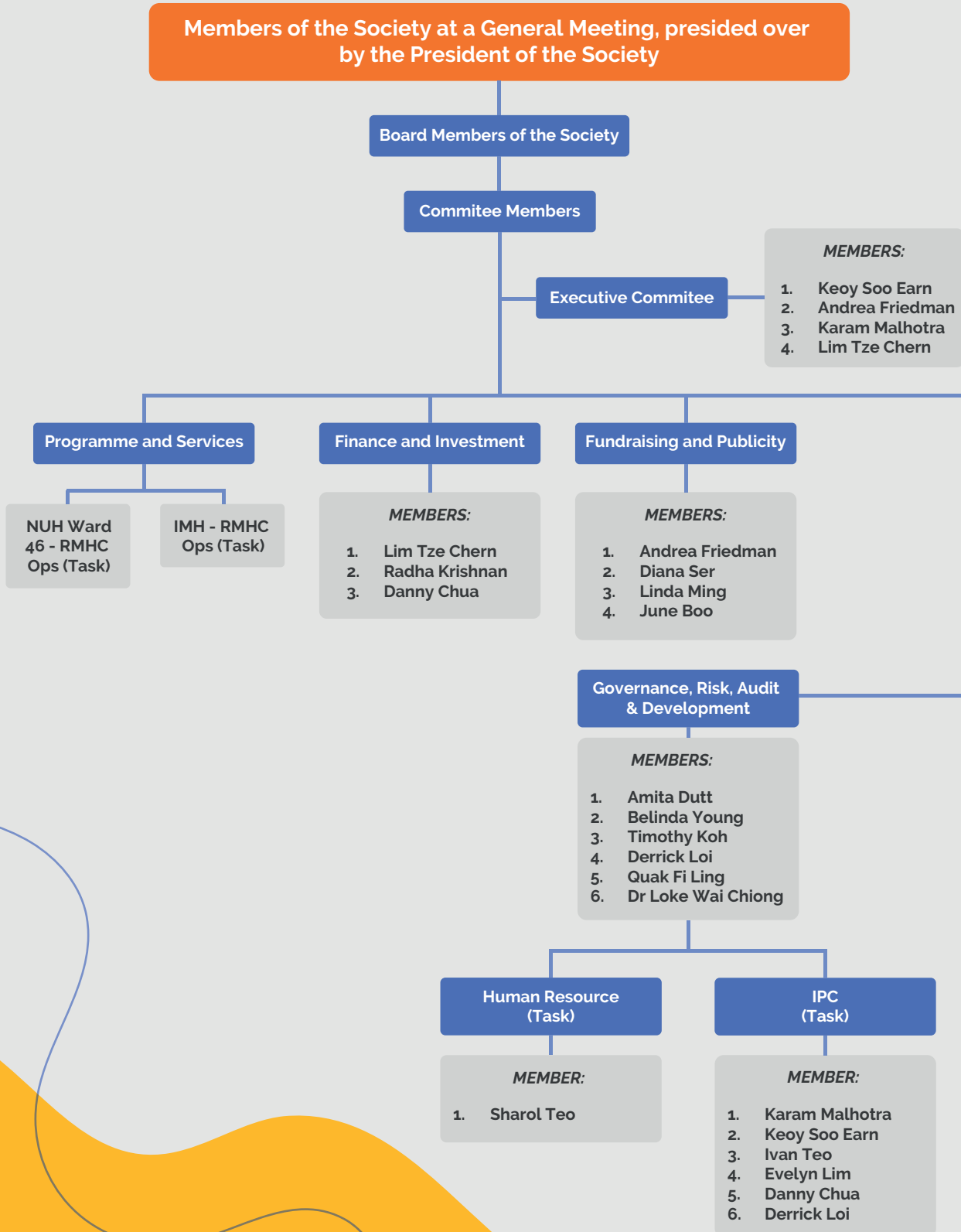
Attendance For Board Meetings In 2025

S/No	Board Members	05.03.2025	26.06.2025 (AGM)	26.06.2025	17.09.2025	26.11.2025	12.12.2025 (EGM)	Participation
1	Keoy Soo Earn	✓	✓	✓	✓	✓	✓	6/6
2	Andrea Noel Friedman	✓	✓	✓	✓	✓	✓	6/6
3	Karam Malhotra	✓	✓	✓	✓	✓	✓	6/6
4	Lim Tze Chern	✓	✓	✓	✓	✓	✓	6/6
5	Amita Dutt	✗	✓	✓	✓	✓	✗	4/6
6	Brian Poh Zhi Qian	✓	✓	✓	✓	✓	✓	6/6
7	Diana Ser Siew Yen	✗	✗	✗	✓	✓	✗	2/6
8	Linda Ming Po Lin	✓	✓	✓	✓	✓	✗	5/6
9	Sharol Teo Hui Ling	—	—	✗	✗	✓	✗	1/4
10	A/Prof Stacey Tay Kiat Hong	✗	✓	✓	✓	✓	✓	5/6
11	Young Hsien Lin Belinda	✗	✓	✓	✗	✓	✓	4/6
12	Boh Si Xiang Benjamin	✓	—	—	—	—	—	1/1
13	Johannes Jeremias Boshoff	✓	✗	—	—	—	—	1/2



The Board member has provided satisfactory explanations and has given sufficient notice of his / her absence from the Board meeting

Organization Chart Of Board And Sub-Committee Members



Our Families Shape Us

Baby Mira's Story

When Mira Koh Xin Rong was born, her family's journey quickly became one of resilience and hope. Diagnosed with Tetralogy of Fallot, a form of congenital heart disease, Mira underwent a life-saving heart repair surgery on 15 July. Complications during and after the operation meant that what was expected to be a critical procedure turned into a prolonged and uncertain battle – one that kept Mira in the Intensive Care Unit for five months.

During this time, Mira's parents remained by her side every day. From 15 July to 15 December, they found refuge at Ronald McDonald House, just steps away from the hospital. In the most critical moments of Mira's condition, proximity mattered. The ability to rest nearby meant they could be present at a moment's notice – especially during times when doctors prepared them for the worst.

"The room offered us rest during the most critical phase of Mira's ICU stay," her family shared. "It gave us the comfort of knowing we were always close enough to attend to her if her condition took a turn."

Beyond physical proximity, it was the sense of quiet support that made a difference. The RMHC team respected the family's need for space during deeply emotional moments, offering care in ways both seen and unseen. "The staff were quietly praying for Mira to recover," they recalled – a gesture that brought comfort during an incredibly difficult time.

The experience also connected them with other families walking similar journeys. In shared spaces, bonds were formed with parents of children in critical condition, creating a community of mutual encouragement and understanding. In one particularly poignant moment, Mira's parent was able to offer a prayer for another child during a Code Blue event – an experience that underscored the strength and solidarity within the RMHC community.

Looking back, what mattered most was having a "home away from home" within the hospital – one that allowed them to remain close to Mira while also finding moments of rest amid the uncertainty.

"To RMHC donors and team," the family shared, "please know that the Room is not just a facility, but a source of refuge for parents going through one of the hardest times in their lives. Thank you for being a blessing to all of us."

Mira's journey is a powerful reminder of why family-centred care matters—and how, even in the most challenging moments, compassion and community can make all the difference.



“

The Room is not just a facility, but a source of refuge for parents going through one of the hardest times in their lives.

”

Our Families Shape Us



Ilhan's Story

Ilhan is turning nine this year. Watching him run around and laugh today, it is hard to imagine the difficult journey his family went through just three years ago.

It has been three years since Ilhan's last operation—three years since the days spent in the Paediatric Intensive Care Unit (PICU), a period his family describes as “the longest month of our lives.” During that time, life stood still, and every moment was filled with uncertainty.

At home, the absence was deeply felt. Ilhan's elder brother, Khalifa, now 13, struggled to understand what was happening. “It was a confusing and frightening time for him,” his family shared. “Our home was unusually quiet. He wasn't welcomed by Ilhan's cries or laughter after school. That silence made everything feel heavier.” Though he tried to stay strong, Khalifa missed his younger brother dearly.

Amid the emotional strain, staying together as a family became both a challenge and a priority. Ronald McDonald House Charities (RMHC) provided that crucial support. The family was able to stay close to Ilhan while still caring for one another.

“RMHC allowed us to stay close to Ilhan while keeping our family together,” they shared. “We could take turns resting, showering, eating, and simply breathing—without feeling like we were abandoning one child for another.” In the midst of fear and exhaustion, RMHC became more than just a place to stay—it was a source of stability. A small but vital anchor of normalcy during an otherwise overwhelming time.

It was not just the space, but the people who made a difference. Simple gestures from staff and volunteers—gentle smiles, quiet check-ins—offered comfort in ways that words often could not. “It reminded us we were not alone,” they said. Looking back, the family reflects on how easy it is to neglect one's own needs when a child is critically ill. “You operate on love, fear, and adrenaline. You forget to eat. You forget to rest,” they shared. “RMHC gently reminds families that to care for our child, we must also care for ourselves.”

Today, Ilhan's laughter fills the home once again. His journey is a testament not only to resilience, but also to the importance of having the right support system during life's most challenging moments.



“

A warm meal.
A safe bed.
A short break.
These are not luxuries — they are lifelines. We will always be grateful for the shelter, kindness, and quiet strength RMHC gave our family during one of our hardest chapters.

”



Our Core Programmes Define Us

Ronald McDonald House @ National University Hospital

The Ronald McDonald House at NUH has been serving families since January 2013, offering a supportive and homely environment. Key features include:

- 4 bedrooms with ensuite bathrooms
- A fully equipped kitchen with ready-to-eat meals
- Dining area, living room, and laundry facilities
- All services are provided at no cost to families

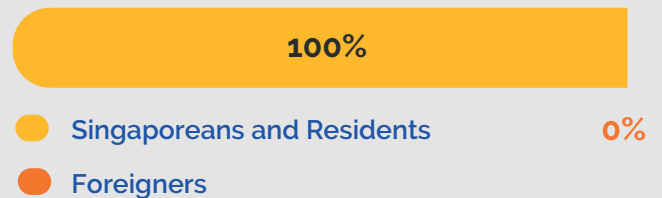
The charity aims to keep families close during difficult times by supporting parent-caregivers, enabling them to care for their hospitalized children in the Paediatric Intensive Care Unit nearby. Since opening, we've provided over 17,000 nights of accommodation to more than 1,500 families, fostering comfort and community during challenging times.



Key Stats 2025

Number of Families Served	100
Nights of Accommodation	1,224
Number of Families Turned Away	11
Waitlist Room Nights	33
Occupancy Rate	83.8%
Median length of stay	6

Nationalities of Guests



RMHC Family Room @ PICU National University Hospital

The Ronald McDonald Family Room at NUH was established as part of the hospital's PICU expansion, through a partnership between NUH and RMHC Singapore. The Family Room at NUH can accommodate up to 28 persons at any one time. Aside from being a place of rest, there are also shower facilities and toiletries provided. The room is open 24 hours daily.

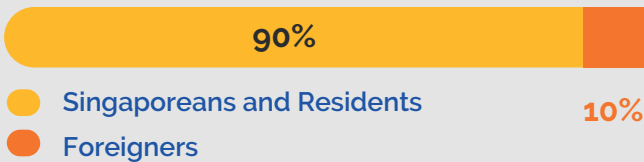
Since its inception in 2016, the Family Room has served 5,867 families, providing a vital space for rest and rejuvenation during challenging times.



Key Stats 2025

Number of Families Served	629
Nights of Registered Guests Served	1,191
Average number of days used per Family	6

Nationalities of Guests



RMHC Family Room @ NICU National University Hospital

In September 2022, the newest Ronald McDonald Family Room was opened within the Neonatal Intensive Care Unit (NICU) at NUH. Designed specifically for parents of hospitalized newborns, it provides a comfortable space for rest and respite.

Features include:

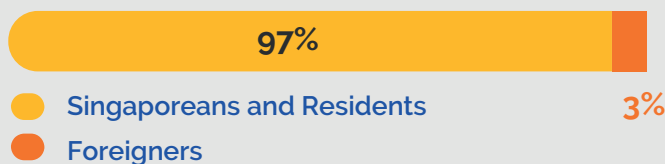
- Two lactation rooms for mothers to pump and deliver breastmilk with greater comfort and convenience
- A dedicated area for relaxation and support exclusively for NICU families

Since opening, the NICU Family Room has served 1,083 families and 1,426 registered family members, offering vital comfort and support during a critical time.

Key Stats 2025

Number of Families Served	360
Nights of Registered Guests Served	715
Average number of days used per Family	16

Nationalities of Guests





RMHC Family Room @ Institute of Mental Health

Situated within the quiet sanctuary of IMH, the Ronald McDonald Family Room provides an oasis of calm and comfort for parents of young patients seeking or undergoing care at IMH. The Family Room at IMH is open to all families whose child is seeking treatment at the IMH Sunrise Wing (6 to 18 year olds) or making outpatient visits at the Child Guidance Clinic. The Family Room is open Mondays to Friday, 9am to 6pm.

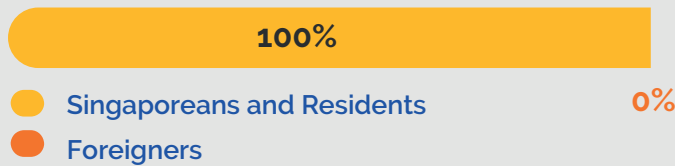
Since its opening in 2017, the Family Room has supported 1,441 families and 1,956 registered family members, offering a much-needed sanctuary during challenging times.

Key Stats 2025

Number of Families Served	193
Number of Registered Guest Served	278
Total Usage for the Year	6,168



Nationalities of Guests



Counting down to the new Ronald McDonald House and Family Rooms at Alexandra Hospital

In October 2024, RMHC proudly announced the launch of its Capital Campaign to raise \$3 million. Scheduled to open in stages from 2029, the new facility will include a Ronald McDonald House and three Family Rooms at the redeveloped Alexandra Hospital, enhancing our capacity to support families during their most challenging times.



Extending our mission of Keeping Families Close with Other Programmes beyond the Hospital

1 RMHC Paediatric Happy Snack Packs

These goody bags, which include snacks, drinks, and craft supplies, are provided to children waiting for their appointments at the outpatient clinics. They aim to make the hospital visit a more pleasant and joyful experience for the little ones.

Snack packs given out: **NUH 6,087 | IMH 650**



UL Solutions, June 2025

2 RMHC Paediatric Happy Wheels Cart

The hospitality cart at the Khoo Teck Puat – National University Children’s Medical Institute (KTP-NUCMI) provides complimentary snacks and drinks to families waiting with their children at the Outpatient Clinic. This service helps make their waiting time more comfortable and manageable.



Felix & Serena, June 2025

3,750 people served

3 Ready-to-eat Meals



For the convenience of our families, we offer frozen ready-to-eat meals at the House and Family Rooms, allowing them to enjoy a balanced meal that is easy to heat up whenever they are hungry.

540 ready-to-eat meals were served throughout the year



Vivian, Nov 2024

4 Meals to Bond Programme

The Meals to Bond programme fosters connections and support among families, offering breakfast, tea and festive meals at the Ronald McDonald House and Family Rooms.



Dec 2025

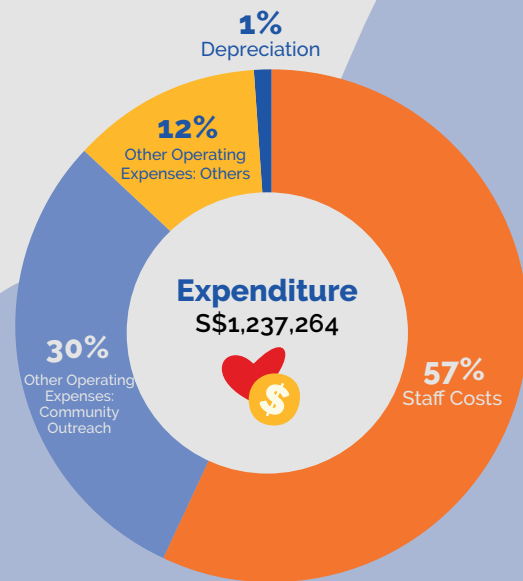
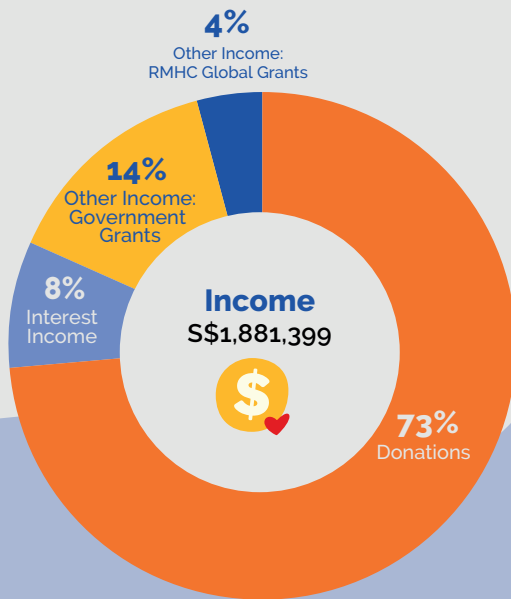
2,018 meals were served throughout the year

5 Respite Care Programme

The Respite Care programme extends our vision to support families and their chronically ill children beyond hospital settings. With the support of Hospitality partners, these families who may not have had a chance to travel overseas are offered staycations at the local hotels to bond and make some lovely memories to call their own.

Summary Financial Performance

Statement of comprehensive income For the financial year ended 31 December	2025
Income	(\$)
Donations	1,369,327
Interest Income	157,710
Other Income	354,362
	1,881,399
Expenditure	
Staff Costs	705,811
Depreciation of plant and equipment	9,412
Other operating expenses	522,041
	1,237,264
Net surplus for the year, representing total comprehensive income for the year	644,135



Key Stats 2025

Occupancy rate for Ronald McDonald House since inception in 2013	91.3%*
Total number of families served at Ronald McDonald House and 3 Family Rooms	10,317*
Total nights of accommodation at Ronald McDonald House	17,768*
Median length of stay at Ronald McDonald House	6 days
Active Volunteers	150

*Since inception

Highlights of 2025

A Birthday Celebration to Remember

We hosted a special birthday celebration for 6 families and children supported by McDonald's, bringing them together for an afternoon of fun, laughter and meaningful moments of connection.

The event featured games, music, and activities hosted by the McDonald's party team, alongside a birthday cake celebration, Happy Meals and goody bags for the children. A surprise appearance by the Minecraft Hamburglar added to the excitement of the day.

This unforgettable celebration created cherished memories for the families and reflected RMHC Singapore's continued commitment to supporting families through moments of joy and togetherness through their journeys.



Celebrating International Family Day

For the first time, we joined our Southeast Asia chapters to mark International Family Day on 15th May celebrating every family we serve. At RMHC, we believe that when a child is seriously ill, a family's love and support can be as powerful as any medicine. That's why we stay committed to keeping families close, offering a nurturing space where they can remain together through every step of the journey. Warm, encouraging messages were shared, bringing comfort, strength and hope to families throughout their recovery.



RMHC Family Day Out - Jurassic World: The Experience with Northern Trust

As a school holiday treat with Northern Trust, we hosted 18 families from NUH and IMH for an unforgettable day at Jurassic World: The Experience in June. It was a roar-some return to the age of dinosaurs, set against the misty magic of Gardens by the Bay. Each child went home with a bag of Dino-themed goodies, along with a memorable experience to cherish.



IPC Status Achieved!

We are proud to announce that we received our IPC status in July 2025. Cash donations to Institutions of a Public Character (IPC) charities are tax-deductible, enabling donors to enjoy a 250% tax relief. We are certain that our new status will boost our Fundraising efforts, aiding future expansions, enabling us to serve even more families henceforth.

Highlights of 2025

Nurses Day

For Nurses Day, we recognised the dedication of our partner healthcare professionals who care for children and families every day. Commonwealth Concepts joined us in distributing freshly baked cookies to the nurses we work with at NUH and IMH.

Beyond Nurses Day, they also partnered us for key festive occasions throughout the year, including Chinese New Year, Hari Raya, Deepavali, and Christmas—helping to create meaningful experiences for families, volunteers, healthcare staff and beneficiaries. We are grateful for their continued partnership and support.



Mid-Autumn Festival

For the second consecutive year, The Fullerton Hotel hosted our families for an enchanting Mid-Autumn Festival celebration. The evening was filled with treasured bonding and meaningful moments, as children learned to craft snow skin mooncakes guided by the hotel's talented pastry chefs. Their joyful smiles beamed brightly, with proud parents by their side.

A sumptuous buffet dinner was also served, adding to the warmth of the occasion. To end this special evening, each family received a plush bear and signature mooncakes to bring home. It was truly an unforgettable experience for all.



RMHC Fun Day Out – The Entertainment and Education Group (TEEG)

During the December holidays, we hosted our second Fun Day Out with Timezone. It was an enjoyable and action-packed afternoon, with attendees receiving game credits and goodie bags to take home, making the occasion a delightful way to commemorate the year-end school holidays together.



Champions And Voices Of Our Cause

Our volunteers are at the heart of Ronald McDonald House Charities, dedicating their time and compassion to support families across our Ronald McDonald House, Family Rooms, and outreach programmes.

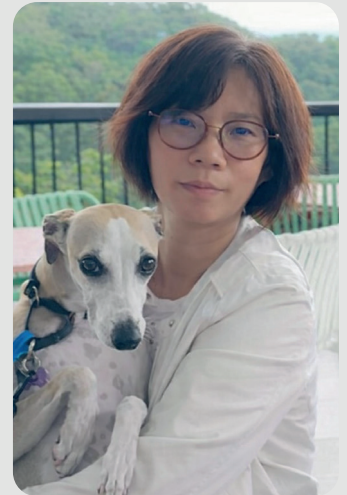
Their selfless commitment plays a vital role in creating a safe, welcoming, and caring environment for our beneficiaries. We are deeply grateful for their unwavering support and the meaningful difference they make in the lives of the families we serve.

1 Tan Mui Choo

Mui Choo has been volunteering with Ronald McDonald House Charities since December 2024 and has become a valued part of the team. Motivated by a desire to give back during her retirement, she has consistently demonstrated dedication and care in her role.

At the Ronald McDonald Family Room at the Institute of Mental Health (IMH), Mui Choo has helped create a warm and welcoming environment for families. She has built meaningful connections with returning families, many of whom deeply appreciate her presence and support during difficult times.

Beyond her regular duties, she has also initiated a small group of donors to support the Family Room by contributing groceries and essential items, reflecting her initiative and compassion. Her kindness, consistency, and generosity continue to inspire staff and fellow volunteers alike, and we are deeply grateful for her contributions.



2 Gifts From The Heart

Gifts From The Heart is a student-led initiative from National Junior College dedicated to bringing comfort to children who regularly attend medical appointments. The team prepares thoughtful tokens such as goodie bags for distribution at the outpatient clinics.

Over the past four years, together with other volunteers, the team has consistently prepared and distributed around 50 gift packs each month. Beyond giving, the initiative also provides volunteers with meaningful opportunities to engage with young patients and RMHC staff, fostering greater empathy and interest in the healthcare sector.

Champions And Voices Of Our Cause

3 Allison Karl

Allison, a member of the American Women's Association, has been volunteering with Ronald McDonald House Charities for almost three years. A social worker from Boston with experience in trauma ICU and hospice care, she is deeply committed to supporting patients and families through difficult times—finding a meaningful connection to this purpose through her volunteer work in Singapore.

She volunteers weekly and also participated in a special Happy Wheels Cart visit with her son, Luca, in December, bringing festive cheer to children at an outpatient clinic. "I am very proud to be a RMHC volunteer and hope to bring a smile to the faces I serve," she shared.

Her compassion is especially evident in her work at the Neonatal Intensive Care Unit at National University Hospital, where families often face high stress.

Her calm and reassuring presence provides meaningful support during these critical moments.



Our Fundraising Efforts



1 Kids for Kids Online Campaign (Oct '24 to Mar '25)

Amount raised: **\$19,556**



Building on the success of the RMHC Kids for Kids online campaign in the previous year, we continued to foster a spirit of giving by encouraging children and their families to pledge a portion of their pocket money to RMHC.

In conjunction with the Chinese New Year period, children were also encouraged to contribute part of their red packet monies. Together, these efforts raised over \$19,556 in support of our mission.

2 Roberta's 3rd Anniversary

Amount raised: **\$10,176**

For the third consecutive year, Roberta's Pizza partnered with RMHC as its charity of choice in celebration of its anniversary. A special 3rd Anniversary Charity Menu was curated and made available from 17 to 23 February.

During this period, enjoying pizzas with family and friends took on added meaning, as all proceeds were donated to RMHC. The initiative raised a total of \$10,176 in support of our mission.



3 RMHC Gala Dinner

Amount raised: **\$390,926**

It was an unforgettable evening at our Gala on 10 October, as we celebrated a Starry Night of Giving. We were honoured to welcome the Speaker of Parliament, Mr. Seah Kian Peng, accompanied by Mrs. Seah, as our Guest of Honour. Together with about 400 guests, we also hosted families from both NUH and IMH, who shared heartfelt stories of how our Ronald McDonald House and Family Rooms had supported them during challenging times.

Thanks to the generosity of our donors and guests, we raised over \$390,000 – exceeding our fundraising goal through table sales and a lively auction segment.





4 Wild Rice Fundraiser - The Emperor's New Clothes

Amount raised: **\$7,750**


It was a fabulous afternoon filled with laughter at the Wild Rice production of The Emperor's New Clothes that was given a Singaporean twist. Best of all, \$7,750 was raised from net proceeds of ticket sales for the event.

Our Invaluable Partnership With McDonald's



1  **10** cents from each Happy Meal sold: **\$479,796**

2  Donations via Self Order Kiosks in **154** McDonalds restaurants: **\$230,286**

3  Collectively, the above efforts have helped RMHC cover at least **57.4%** of overall expenditure in 2025.

Corporate Sponsors And Supporters For 2025

Aardwolf Pestkare (S) Pte Ltd	Kerry Ingredients (M) Sdn Bhd	Solenis Singapore Pte Ltd
Absolve Pest Control Pte Ltd	Key Cleaning Services	Sound Wurks Pte Ltd
Adred Creative	Kian Contract (S) Pte Ltd	St Joseph's Institution International
Alps Group Pte Ltd	Kitchen Solutions Consolidate Engineering Pte Ltd	StarHub Limited
Amazon	Knots with Love FHG	Suite Interior Design Pte Ltd
Anantara Siam Bangkok	Knox Pte Ltd	Sunlight Paper Products Pte Ltd
Archideas Design	Kwan Yong Electrical Engineering Pte Ltd	Super Bean International Pte Ltd
Aryzta Singapore Pte Ltd	Lamb Weston International Pte Ltd	SW1 Clinic
Background Screening SG Pte Ltd	Lenovo (Singapore) Pte Ltd	Systems Design Pte Ltd
Banyan Tree Hotels & Resorts Pte Ltd	Linkgas Engineering Enterprise Pte Ltd	The Dallas Group of America Inc
BD Fit Pte Ltd	Love Winter Crafts	The Fullerton Hotel Singapore
Bibby Financial Services (SG) Pte Ltd	Makeup by Fiona Bennett	The Shangri-La Hotel, Singapore
Binal International Pte Ltd	Marmon Cornelius (Singapore) Pte Ltd	Thermo Fisher Scientific
Boehringer Ingelheim Singapore Pte Ltd	Martin Brower Singapore Pte Ltd	Tily Tea
Braemar Shipbroking Pte Ltd	MC Design & Solution Pte Ltd	Timezone Singapore Pte Ltd
Cargill Asia Pacific Holdings	McCormick (Thailand) Ltd	TKC Building Contractor Pte Ltd
Cartus Corporation Pte Ltd	MCD Global Franchising Limited SG Branch	Tokugei Design Studio Pte Ltd
Central Provident Fund Board	McDonald Department of Delivery and Drive Thru	Tradeweb
CHIJ Our Lady Queen of Peace	Medpace Singapore	Tyson Malaysia and Tyson Thailand
CIMB Bank Bhd	Megabuilders & Development Pte Ltd	UCC Coffee Singapore Pte Ltd
Coca-Cola Singapore	MIDO Uniforms Pte Ltd	UL International Singapore Pte Ltd
Commonwealth Concepts	Mii Foodservice Pte Ltd	VF Singapore Overseas Services Pte Ltd
Continental Equipment Pte Ltd	Mrs Kueh	Violet Oon Singapore Pte Ltd
Corgan Architects Singapore Pte Ltd	MY Food Equipment Services Pte Ltd	voco® Dubai by IHG
Crowne Plaza Dubai Marina	My Turn To Host	Watson Farley & Williams LLP
CRS Communications Pte Ltd	N & N Agriculture Pte Ltd	Welbilt Asia Pacific Private Limited
Diversey (Singapore) Pte Ltd	Nestle Singapore (Pte) Ltd	Wildlife Reserve Singapore Pte Ltd
DTCC Data Repository (Singapore)	Netrans Logistics Pte Ltd	With Intelligence Pte Ltd
EAM Engineering Pte Ltd	New Port Duty Free Pte Ltd	Wyndham Hotels & Resorts, Asia Pacific
Ecolab Pte Ltd	Nexus TCM	Yeo Eng Koon (S) Pte Ltd
Ecolab Singapore	OMD Singapore Pte Ltd	Yong Chang Electrical Pte Ltd
Ellipsiz DSS Pte Ltd	Optal Singapore Pte Ltd	
EPTA Asia Pte Ltd	Ovolo Hotels	
Equipmax Pte Ltd	Part Thai	
F&N Foods Pte Ltd	Pierre Hermé Paris	
Fonterra Co-operative Group Limited	Pop Padel	
Friends of Dulwich (Singapore)	Prime Power (S) Pte Ltd	
Fuchsia Lane	Project Janan	
Gifts from the Heart	Raffles Girls Primary School	
Golin Pte Limited	Raffles Hotel Singapore	
Google Asia Pacific	Red Hats	
Griffith Foods Limited	Refined Technologies AP Private Limited	
GSK	Revantage Global Services Asia Pte Ltd	
H&C Equipment Pte Ltd	REVL Rochester	
H.T. Engineering & Services Pte Ltd	Ricmas PCM Pte Ltd	
H+K International Limited	Roberta's	
Hai Yong Engineering Pte Ltd	Royal Equipment (Pte) Ltd	
Hanbaobao Pte Ltd (Licensee of McDonald's)	Salesforce Singapore	
HAVI Freight Management (S) Pte Ltd	SAS Grade 2 Immersion Class	
HAVI Global Solutions (Asia Pacific) LLC	Schonfeld Strategic Advisors (SG) Pte Ltd	
Heartistry	Scientific & Industrial Instrumentation Pte Ltd	
Huason Construction Pte Ltd	Sealy Asia (S) Pte Ltd	
Huhtamaki Singapore Pte Ltd	Seroja	
ie IDEAS Pte Ltd	Shangri-La Rasa Sentosa, Singapore	
Institute of Mental Health	Shirtek Services and Equipment Supplies	
Interpress Printers Sdn Bhd	Signmechanic Pte Ltd	
J.R. Simplot Company	Simplified Technology Pte Ltd	
JR Group of Companies	Singapore Pools (Private) Limited	
Jurong Pioneer JC	Singapore University of Social Sciences	

Individual Sponsors And Supporters For 2025

Audra Goh	Florence	Muhammad Solihin Fisabilillah	Wai Han
A/Prof Stacey Tay	Frederick	Natalie	Wee Joon Luan
Aandhal Nena Ganesan	Gladus Tan	Neil Patwardhan	Wee Yoke Keng
Abigail Cheng	Goh Hock Guan	Ng Chee Wei	Williams R
Aelius Ang	Guvevich Jessica	Ngo Ai Wen	Wong Chi Chian
Ahmad Isnaidi Bin Sa'dullah	Haebin Kim	Nikhil	Wong Leng Fang
Ailian	Harrison	Noah	Wu Shaoqun
Alice Young	Heather Woo	Nur Aishah Binte Ishak	Xanthea Goh
Allison and family	Heng Wei Mei	Ong Hong Yuh	Xavier
Amruthan d/o Kalaiselvan	Herlene	P Danaraj	Xiao Terry Chen
Andrea Noel Friedman	Hui Min	Pankaj Sakhuja	Xinyu
Angie Tan	Ivy	Park Han Na	Yap Eng Lin
Anita Choong	Jack	Patricia Lim	Ye Fan
Annabelle Ong	Jacklyne and family	Perera Parana Vidanelage Chamini Prasad	Yeo Seck Hong
Ansel	Janey Wong	Prasi	Yeo Ya Yun
Anthony Tan	Jennice Shankar	Quak Fi Ling	Yong Chai Yee
Ashish Kumar	Jenny Tan	Raghav Mehta	Yongen Cen
Aznita	Joe Loy	Raphaella	Zain Suharwady
Benjamin Wu	Judy Seah and friends	Renyung Ho	
BK Ooi	Jun Hang	Riley	
Bliss	June Boo	Roe Elizabeth Anne	
Bold Courtney Taylor	Juntiong	Ruth	
Brenda and friends	Kam Sook Wei	Ryder	
Cai Kunjing	Kannika	Santha	
Cernobrovkin Aleksandr	Karam Malhotra	Serena	
Chan Yong Jie	Keilin	Serene Koh	
Charissa Chua	Kelvin Tan	Shankar Kudupudi	
Charlene Yong	Kenneth Chan	Shareen Kaur Sukde Singh	
Charlotte	Keoy Soo Earn	Sharon Tan	
Chen Ruiyi	Kian Leong	Sheralyn Koh	
Cheng Pei Pei	Kimarie Cheang Xiao Pin	Sheree Lau	
Cheryl	Kimberly Meisee Unwin	Shi lan	
Christina Lim	Koh Choong Yong	Sierra	
Christina Tan	Koh Han Xiang	Siew Kee	
Chua How Kiang	Koh Soon Bee	Sim Ju-ee Tabitha	
Cindy Tan	Lau Seo Yat	Sky Sek	
CK and May Lim	Laura Yeo	Sparsh Mehrotra	
Clarissa Chan	Leia Sharon Chua	Sumeet Malhotra	
Claudia Sondakh	Leng Ee-lan	Sylvia Koh	
Connie	Lian Youming	Talitha	
Daniel	Liew Hsiao Voo	Tan Chue Er Joey	
Desmond Zhang	Lilian	Tan Hock Neo Gladys	
Dian Faiqah Binte Yunus	Lily Chua Dewi	Tan Jia Qing	
Doryne Tan	Lim Yee Hwa	Tan Mui Choo	
Dr Jacqueline Ong	Lindsey Ann Keeble	Tan Yang Ping	
Dr Kristy Fu	Loi Kok Wee	Tan Yang Pinh	
Dr Nicola Ngiam	Loo Mong Kiat	Tang Khan Loon	
Dr Sabrina	Louis	Tanya	
Dr Thong Wen Yi	Luther Loh	Thaw Tar Phyto	
Elaine	Lynn Goh	Thomas	
Elizabeth Ann Leow Minn Hwi	Maggie Lee	Tiffany Su	
Elizabeth Meera	Marjorie Elizabeth Lee Leong	Toh Yit Ming	
Elya Zehra	Melanie Song	Tummala Rajeev Reddy	
Esther Lim	Meliza and family	Turner III Jimmy	
Eugene Seah	Melvin	Ungerman Heather Joanne	
Eva Zehra	Michael and Joanna Blanding	Valerie Yew	
Ezra	Michelle	Veenu	
Felix Tan	Mohamed Nyiyaz Bin Mohideen Meethen	Viggers Charles Peter McMillan	



Ronald McDonald
House Charities®
Singapore

Keeping families close

Make A Donation

HELP US BRING A SMILE TO THE FAMILIES
CARING FOR THEIR SICK CHILDREN.

GIVING.SG



PAYNOW



UEN: S98SS0006C

Please visit our website for the Audited Financial Statement for FY2025.

Ronald McDonald House Charities Singapore
5 Lower Kent Ridge Road
National University Hospital, Main Building Level 4
Singapore 119074

Tel: (65) 6778-1934
contact@rmhc.sg | www.rmhc.sg

Follow us at:

-  Facebook: @RMHCSG
-  Instagram: @rmhcsingapore
-  Youtube: @rmhcsingapore
-  LinkedIn: Ronald McDonald House Charities Singapore