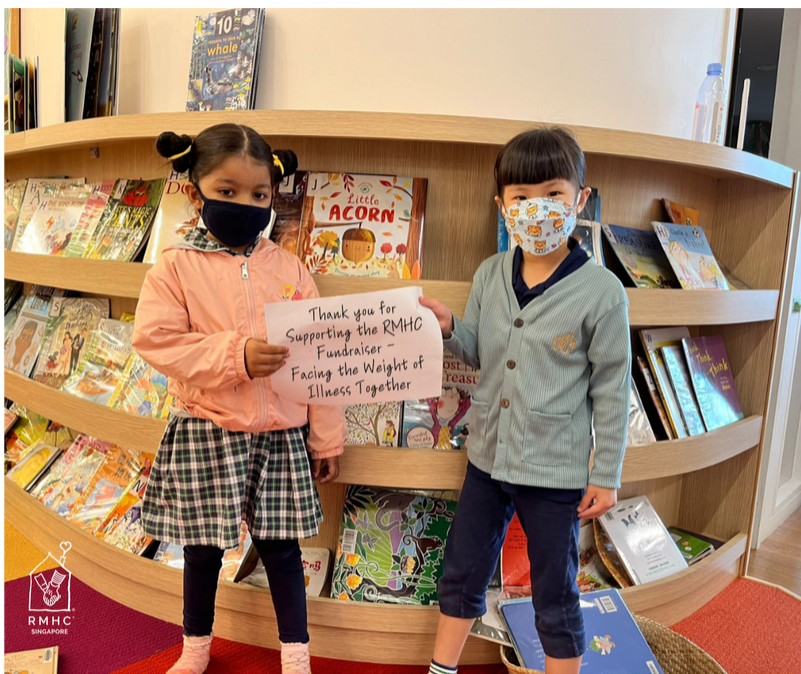




## RMHC Singapore Newsletter

Bi-Monthly Newsletter

Dear '[FNAME]'



As our Ronald McDonald House Charities (RMHC) Fundraiser - *Facing the Weight of Illness Together*, draws to a close, the entire team and the board would like to take a moment to show our heartfelt appreciation and gratitude to those who have given generously towards our cause.

It is through your kindness and support that we have managed to raise **\*\$45,112 from a total of 76 donors**. This will go a long way in helping the families who are either staying with us at the Ronald McDonald House in National University Hospital (NUH) or resting in one of our two Ronald McDonald Family Rooms at NUH and the Institute of Mental Health (IMH).

We believe that no family should have to deal with their child's medical crisis alone, and we thank you for your support in helping our families.

If you would like to help us achieve our initial goal of \$100,000, there is still time to do so! Please visit <https://s.giving.sg/iOPoKIL> to make a donation by **Friday, 31st March 2022** or click the below button.

\* Information accurate as of 24.03.2022.

[Click to donate](#)

### Heartfelt Stories from our Beneficiaries



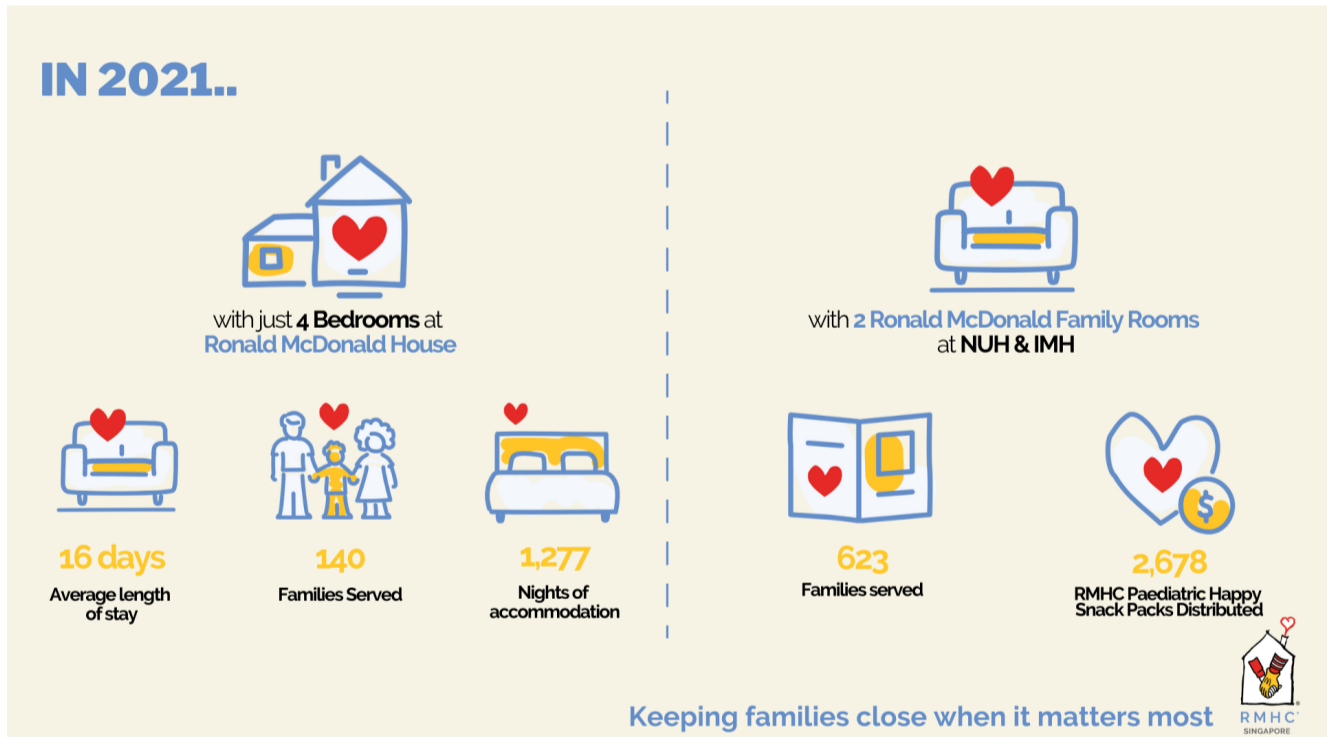
Appointments at the Institute of Mental Health (IMH) can sometimes take a long time as the doctors and psychiatrists may have to see the patient and their caregivers separately, one after the other. This is where our Ronald McDonald Family Room can help.

Find out what 'Elle and her 16-year-old son 'David, who suffers from ADHD has to say about their experience at our Ronald McDonald Family Room @ IMH.

\* Names have been changed to protect the privacy of the individuals

[Read the full story here](#)

### Our Impact



Every RMHC programme that you help support gives families with sick children more tools to cope. Thank you for your continued support in our mission of helping us keep families together when they need it most.

To find out more about our RMHC programmes, you can email us at [comms@rmhc.sg](mailto:comms@rmhc.sg).

[Click here for more RMHC Programmes](#)

## MAKE A DONATION

**GIVING.SG**



**PAYNOW**



UEN: S98SS0006C

Help us bring a smile to the families caring for their sick children



Ronald McDonald House Charities (RMHC) Singapore is a local chapter of the international Ronald McDonald House Charities.  
RMHC Singapore is a registered society and charity on a simple mission to create, find and support programmes that directly improve the health and wellbeing of children.  
RMHC Singapore is registered under the Societies Act (UEN: S98SS0006C) but not an Institution of Public Character (IPC).

Want to change how you receive these emails?  
You can [unsubscribe](#) here.